

## Signs of Fleas

- **Adult fleas**

Often found around the tail and around the belly



- **Itchiness**

Mange can also cause itchiness



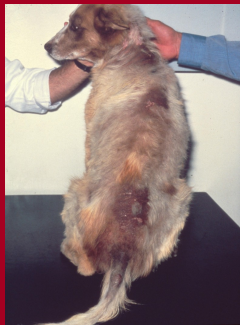
- **Flea dirt**

This is flea poo, digested dog blood



- **Flea Allergy Hair loss**

Dogs have an allergic reaction to flea bites and chew their fur off



- Most flea treatments only kill the fleas that day
- Because most of the fleas come from the yard, beds and carpets, the dog quickly gets more fleas

• **Treat the yard and bedding as well as the dog**

- Use flea control that lasts a month for better results
- Some dogs get allergic to fleas and lose the hair on their back. These dogs may need a vet's help .

08 89418813



[www.amrric.org](http://www.amrric.org)

# Fleas

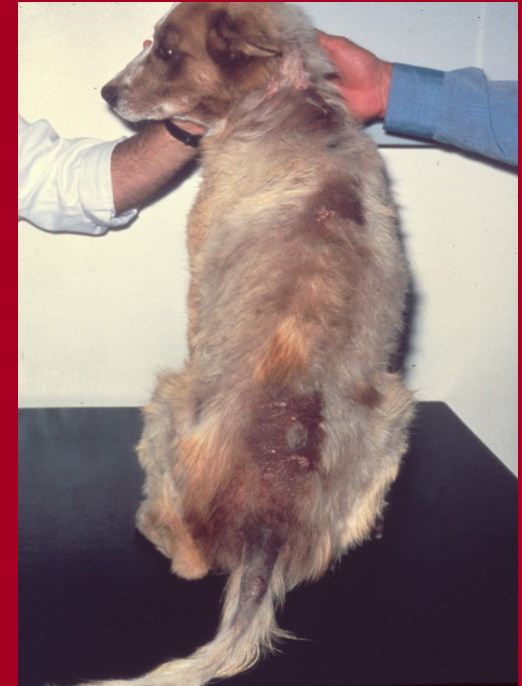


Photo courtesy of O.L.I.V.E.R.

How to keep your dog free from fleas



# Flea Treatments

## • Flea shampoo / powder

Lasts for a few days.  
Use weekly.  
Kills fleas on the dog.



## • Flea collar

Long lasting,  
but poisonous.  
Doesn't work  
if it gets wet.



## • Frontline/ Advantage

Lasts for 1 month.  
Kills fleas on the dog.  
Comes as a spray or a  
'topspot'



## • Yard spray/ Flea Bomb

Kills fleas in the yard,  
where most fleas come from



But the flea  
eggs drop onto  
the ground

Fleas live on the dog,  
biting and drinking  
their blood

5%

Only 5%  
of the flea  
problem  
is on the  
dog



Most of the  
problem  
is in the yard  
and in the  
dogs' bedding

Adult fleas  
hatch and jump  
onto dogs or  
people, looking  
for a feed

95%

The eggs hatch  
and the larvae crawl  
away from the sun  
into the grass  
or carpet.

The eggs and pupae  
cannot be killed  
with flea treatments

Here they become pupae  
for days to months  
while the adult flea forms

